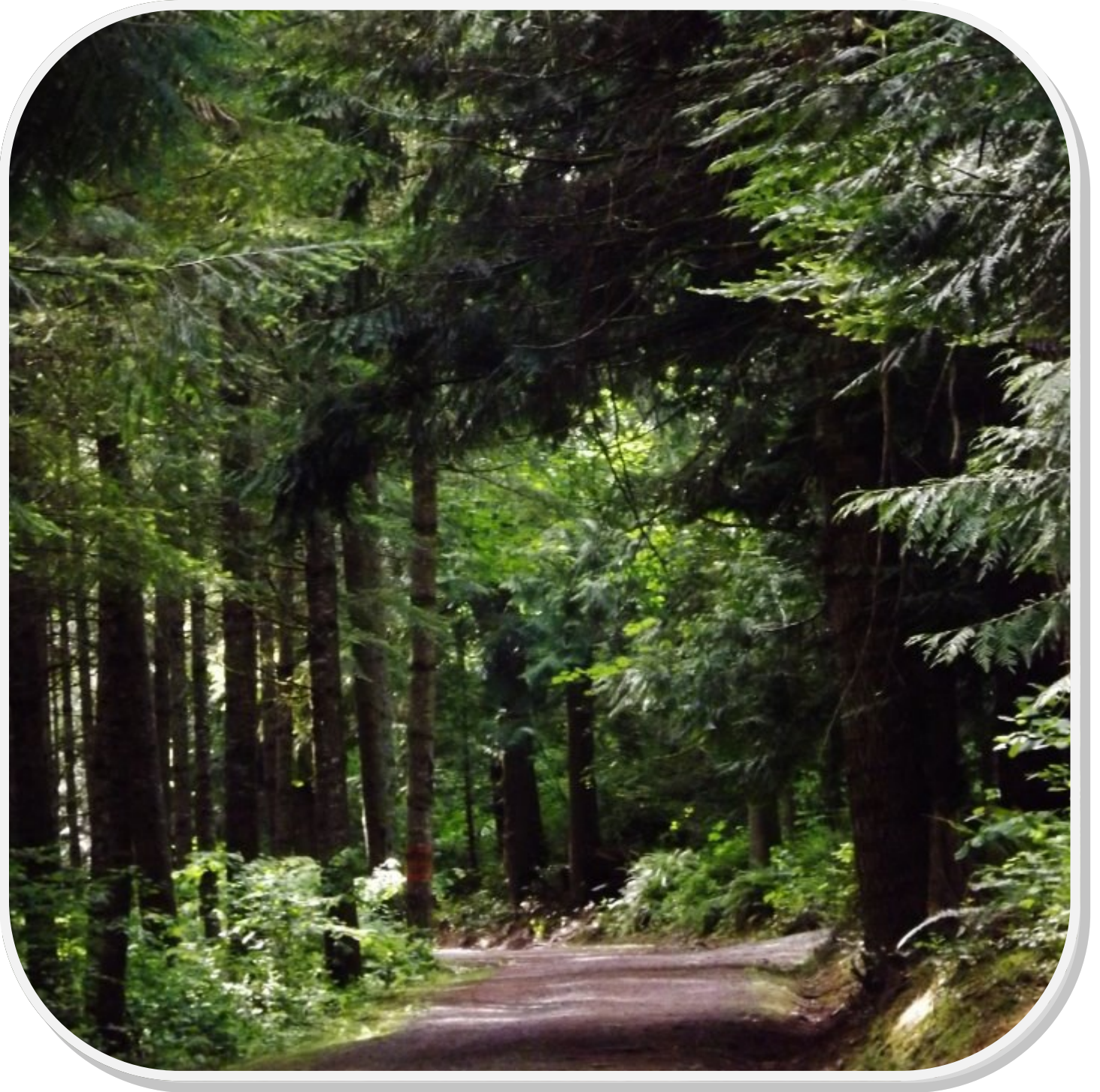


2013 Annual Report Forests Forever, Inc.



Hopkins Demonstration Forest

Board of Directors 2013

Ken Everett, Executive Director, Colton
Consulting Forester

Mike Bondi, Board Chair, Lake Oswego
Extension Administrator

Maralyn Turner, Secretary, Portland
Educator—retired

Glenn Ahrens, Oregon City
Extension Forestry Agent

Fran Caffereta Coe, Hillsboro
Wildlife Biologist

Mary Castle, Oregon City
Forest Engineer

Mike Daly, Mulino
M.D. —retired

Rick Gruen, Lake Oswego
Clackamas County

Mike Haasken, Molalla
Stewardship Forester

Dave Hill, Oregon City
Professional Engineer—retired

Jim Kadera, Oregon City
News Media—retired

Mike Piazza, West Linn
Bank Management Executive

Frank Wille, Oregon City
Business Executive—retired

Staff

Tim DeLano, Community Forestry Educator

Don Chase, Special Projects

Dick Stiles, Special Projects

Forest Hosts

Margi Wyatt

Marcelino Maceda

Layout and Design

Jean Bremer, OSU Extension Service

Mailing Address

Forests Forever, Inc.

P. O. Box 1320

Oregon City, OR 97045

Business Office Phone: 503-655-5524

Business FAX: 503-824-5527

Hopkins Demonstration Forest

16750 S. Brockway Road

Oregon City, OR 97045

Tree Farm Phone: 503-632-2150

www.demonstrationforest.org

www.facebook.com/HopkinsDemonstrationForest

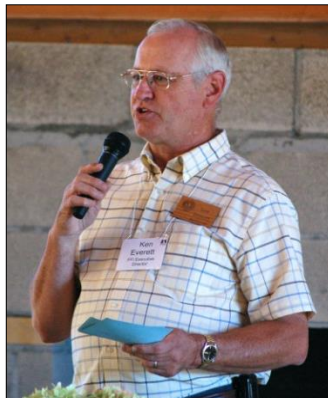
Dear Friends and Supporters,

Forests Forever, Inc. had another very busy year in 2013 full of new and exciting programs, new visitors to Hopkins Demonstration Forest, and a time of change on our Board of Directors and staff. All of us on the Forests Board feel very fortunate to be involved with such a vibrant and positive organization in our community and one that is making a real difference in natural resource education. As one of our original founders, I can say that it is hard to believe it's already been nearly 25 years since our inception.

I hope you enjoy this annual report. We are highlighting here the major accomplishments and activities during 2013. I encourage you to come out to Hopkins, enjoy a walk in the woods, see what we are doing, and meet our volunteers, staff, and community members who value this place.

Finally, I would be remiss if I didn't provide a heartfelt thank you to the many people who help us bring Hopkins Demonstration Forest to the community. Included are the dedicated Board members who volunteer their time and talents to provide the leadership for Forests Forever, Inc.; our financial contributors to the FFI Education Consortium who raise nearly \$100,000 each year to sustain our education program; our volunteers who come to work in the woods maintaining facilities, planting trees, building trails —whatever it takes to manage our property; and our Friends of Hopkins members who provide their financial and in-kind goods and services to help make us successful in our outreach.

We do appreciate all of your support!
Ken Everett, Executive Director



About Us

Forests Forever, Inc. (FFI) is a federally tax-exempt non-profit organization that was incorporated in Oregon in 1990. The volunteer organization was formed to receive the gift of 120 acres of forest land in Clackamas County known as Hopkins Demonstration Forest. The property is located near Beavercreek about seven miles southeast of Oregon City. The fiduciary and management responsibility for the Hopkins Demonstration Forest comes from FFI.

Forests Forever, Inc. is served by an all-volunteer Board of Directors. Together, these community members volunteer more than 2,000 hours per year to help manage the demonstration forest and the non-profit organization.

Our Board is a “working” Board. Besides attending monthly three-hour meetings to conduct the business of FFI, Board members volunteer at monthly Community Forestry Days, provide leadership for Board and farm operational committees, help with education programs, write newsletter articles and newspaper stories, and raise funding support for FFI. This is an amazing group!



A Very Special Place

We are proud to say that Hopkins Demonstration Forest is like no other place in the United States. We are a true “community forest.”

We are a special place where the community *learns by doing*—helping us manage and care for the forest. Our work is done by volunteers who nurture and grow the trees into a forest...who build and maintain the trails for the foot travel of our visitors...who help others in the learning that happens when we work together...and, who share the vision of this wonderful gift known as the Hopkins Demonstration Forest.



During 2013:

- More than 600 volunteers came to Hopkins to work in the forest, to learn by doing and to share their talents while contributing over 2,700 hours of service.
- 70 educational programs, tours, demonstrations, and events were delivered at Hopkins reaching 1,125 youth (grades 4 through college-aged) and adult learners.
- Our 13 Education Consortium members provided more than \$86,000 of cash contributions to sustain our education programs and community outreach.
- An estimated 3,500 recreational visitors came to Hopkins Demonstration Forest to hike our trails, walk their dogs, and enjoy the forest.

The following pages highlight some of the most significant accomplishments and activities of the past year. We hope you enjoy these stories and photos.

If you haven't been to Hopkins lately, be sure to come see us. We are open daylight hours, seven days a week. If you'd like a guided tour or wish to bring a group, call ahead for an appointment and to make arrangements. We are always happy to accommodate.

Also, be sure to check out **Forest Hall**—the newest addition to the Hopkins Demonstration Forest. Forest Hall opened to the public in 2012 and is available for rental. We host education programs, family meetings/reunions, business meetings, retreats, weddings, and other life events. We can seat 35-75 participants depending on the set up. We feature a catering kitchen and a beautiful view of the surrounding valley. During 2014 we will complete a field stone patio outdoor area that will add another great meeting and event space. Check out our website for all the details.



Youth Get First Taste of 4-H

The 4-H Cloverbud program is designed to be a first exposure for children (kindergarten to grade three) who are not old enough to participate in the regular 4-H club program—usually 4th grade or age nine. For the past two summers, the Clackamas County 4-H program has sponsored a Cloverbud Camp program targeting pre-4-Hers, their parents, and in particular our Latino community. Cloverbud camp has been held at the Hopkins Demonstration Forest for the past two years.



“4-H is not a program many Latino families know about,” said Camp Coordinator and Clackamas County 4-H Extension Agent Jan Williams. “We wanted to provide a fun, comfortable and developmentally appropriate educational setting for our first-time 4-H participants and their families.”

During the summer of 2013, thirty-five youth attended two, three-day day camp experiences at Hopkins Demonstration Forest near Beaver Creek. Transportation was provided at no extra cost to the participants in the Molalla and Sandy areas. Special effort was made to encourage and enable Latino youth participation. Out of the thirty-five youth attending the three-day camps, twenty-nine were Hispanic.

Daily hikes into the woods and fields at Hopkins provided a variety of age-appropriate activities including arts and crafts, nature hikes and stories, forestry, science, wildlife, general ecology, and natural resource conservation. Also, the camp programs were successful in getting disadvantaged and underserved young campers registered, expanding their opportunity to interact with nature and learn about environmental concepts that should help forge connections with earth stewardship. At the same time, creative arts, nutritious lunches and snacks, as well as outdoor exercise all encouraged healthy lifestyles.



4-H Cloverbud Day Camp will be offered again in 2014. Since many of the youth targeted by the Cloverbud Camp come from families who cannot pay for the opportunity, a continuing and sustainable source of community funding will be needed to continue this program. Another hope is to offer additional day-camp experiences for the next age level (nine to twelve years old) with an overnight campout on the last day.

Youth Education—heart of Hopkins Forest outreach

The design and delivery of learning opportunities for youth participating in school forest learning programs remains the primary focus of work at Hopkins. This learning takes many forms including forest tours, science inquiry curricula, forestry demonstrations, field days, in-school activities, and service work projects.

During 2013, the schools listed below participated with Hopkins Demonstration Forest in our forestry and natural resource education programming. Students gained knowledge from 47 programs throughout the year. Multiple visits to our forest and forestry learning opportunities in their classrooms in the region were all part of these education experiences. Thanks to all for your interest and participation!

- Richmond Elementary, Portland
- Canby High School, Canby
- DePaul Center, Portland
- Mitch Charter School, Portland
- Sandy High School, Sandy
- Portland State University, Portland
- Reed College, Portland
- Madison High School, Portland
- Oregon Outreach, Inc., Molalla
- St. John Apostle Catholic School, Oregon City
- Grace Christian School, Gladstone
- Franciscan Montessori Earth School, Portland
- Oregon City Learning Academy, Oregon City



Oregon Outreach, Inc. Aquatic Studies.



Forest inventory, school day.



Franciscan Montessori Earth School. Fine earth fraction.

Workforce & Youth Leadership Development

Providing real-life work experiences and opportunities for developing the next generations of leaders in the community is another important role we play at Hopkins Demonstration Forest. Our “learning by doing” approach to education is a natural connection for creating work experiences for young people. Teaching and mentoring as we educate and work together becomes a perfect match.

Listed on the next page are workforce and leadership development projects that took place at Hopkins during 2013.

Eagle Scout Project by Brad Pfeiffer installed interpretive exhibits in the Uneven Age Management Area (UEMA). Five exhibits were installed last summer including an orientation/introduction panel. The intro panel was installed at the edge of UEMA parking/turn-around and the other four exhibits were placed at designated locations along the log hauling road going to the bottom of the hill. About 20 Scouts and adults participated.



Signboard just about ready.

Eagle Scout project by Sam Packham included cleaning and staining the puncheon (boardwalk section) and complete trail maintenance on both sides of the puncheon. In addition, the scouts helped complete a Hopkins Demonstration project by installing a bench adjacent to the puncheon located on West Loop Watershed Trail. Sam secured a donation of wood chips for the trail portion of his project. Both of Sam's older brothers completed Eagle Scout projects at Hopkins in past years, as well.



Sam Packham crew staining puncheon.

Eagle Scout Project by Daniel Linebaugh completed an amphitheater stage for the Forest of Arts event in early October. This three-piece stage is "portable" and can be removed and/or moved to another location as needed. The stage was appreciated by the musicians at Forest of Arts and a nice addition to our facilities at Hopkins!

DePaul Center in Portland has been bringing their young people to Hopkins for nearly 10 years for work experience training. In 2013, they worked closely with the Clackamas Master Gardeners who mentored the youth on two landscape projects at Hopkins—irrigation pipe installation and the landscaping of Forest Hall.

GreenCorps is a project managed by the Clackamas County Juvenile program. During 2013 the County's staff and their student participants gathered wood and processed it for firewood. The youth then sold the firewood at the Oregon City Farmer's Market. The sale of firewood was part of the Juvenile Program's entrepreneurial focus to help the youth learn business management skills.



Eagle Scout project Sam Packham carrying the bench.

Parrott Creek Ranch in Oregon City is another long-term partner with Hopkins Demonstration Forest. The Forest provides an important nearby field location to help youth learn good work habits in an outdoor environment. Over the past six years, the Ranch has been involved in trail maintenance focused on cutting back blackberries and other encroaching vegetation on Red Alder Trail, Middle Loop Watershed Trail, Red Cedar Trail, Shortcut Trail, and Hopkins Trail.

Volunteers Make Special Contributions at Hopkins

Forests Forever and Hopkins Demonstration Forest are blessed with many wonderful community volunteers. None stand out brighter than the Oregon State University Master Gardeners. During the past two years, the Clackamas Master Gardener chapter members have donated their time, talents, supplies, and funding to create a Native Plant Garden at Hopkins Hall. In 2013, they added another project—the landscaping of Forest Hall. Master Gardener, Carol Koshkarian from Beavercreek, has provided the leadership for a group of dedicated fellow volunteers—including FFI Board members Mike Daly and Frank Wille. In the spring of 2013, the Gardeners planted more than 500 plants. All were donated from local nurseries and gardeners to establish the Forest Hall landscape.

Also in 2013, the Master Gardeners organized the installation of an irrigation system for the Native Plant Garden outside Hopkins Hall. Carol's personal landscaper offered his crew (which included about 18 man-hours of time) to install the irrigation pipe and controllers which were purchased, in part, with Master Gardener funds, while other equipment was donated.

Throughout the summer months the Master Gardeners planned two regular workdays per month at Hopkins. Besides working together on their projects, the Gardeners have taken a half-dozen or so youth under their wings from Portland's DePaul Center to provide training in gardening and landscaping. This is a great learning and mentoring time for everyone involved and another important contribution to the community.

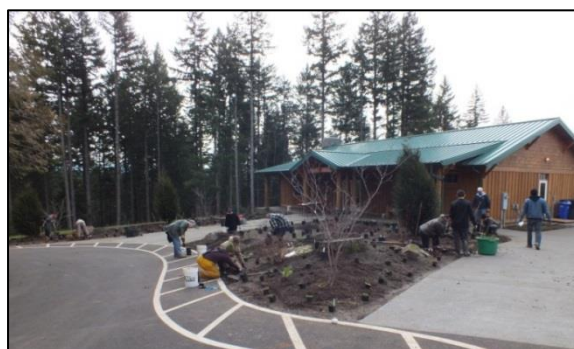
This is truly an amazing group of volunteers that have passion for what they do, know how to get things done, are experts at leveraging community support, and are some of the nicest people you will ever meet! Carol Koshkarian is an incredible volunteer who we cannot thank enough.



Master Gardeners discussing the plan of the day.



Installation of the irrigation system.



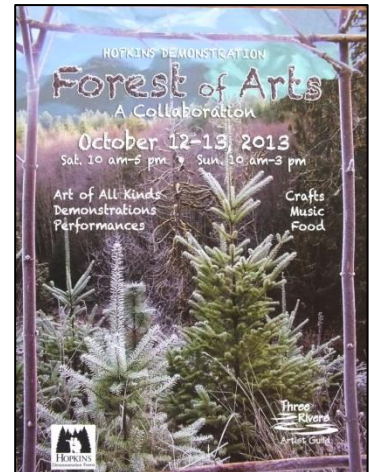
Master Gardener's working on projects around Forest Hall.

Forest of Arts—first-time event a huge success!

Author: Jim Kadera, Forests Forever, Inc. Board Member

A unique **Forest of Arts** event was the signature new program for the Hopkins Demonstration Forest during 2013. Held the second weekend in October, the event was rated a big success by visitors, exhibitors, and the main sponsor.

About 800 attended the indoor-outdoor gathering. As the visitors wandered through the Hopkins buildings and the surrounding green forest, they witnessed everything from professional oil and watercolor art to totem pole carving, and crude wooden musical instruments hanging from tree limbs. A few adults even joined children in painting designs and faces on wood cookies sliced from tree branches.



"We haven't seen this many people here before," said Mike Bondi, chairman of the Board of Directors at Forests Forever Inc. Hopkins is a 140-acre forest south of Oregon City that is owned and managed by the non-profit FFI. "It was an outstanding event for connecting the community to us in ways that most people had not done before—coming to the forest for an art show. We had almost 100 volunteers helping, including many first-time visitors to the farm."



Bondi and other board members applauded the Three Rivers Artist Guild (TRAG) which cooperated with FFI in planning and staging the event. "There was a tremendous amount of enthusiasm from TRAG," said Mike Piazza, a board member who helped with the planning.

Lynda Orzen of Oregon City, who served as a project coordinator for TRAG, helped plan the event and recruited artists to participate, including several who came from beyond the Portland metro area.

"It exceeded my expectations," Orzen said. "I didn't think so many people would show up. All of the artists want to come back. The setting was spectacular!"



The TRAG board liked the **Forest of Arts** event so much that they started inquiring about FFI's interest in a follow-up event during 2014. Forests Forever Inc. has already agreed. Be watching for the artists in the woods coming on October 4-5, 2014. Orzen says TRAG plans to recruit more artists and encourage the installation of art in the forest besides exhibiting in the buildings. "We are planning for bigger and better!"



Event costs were financed for the inaugural **Forests of Arts** by a \$5,000 sponsorship grant from co-sponsor Clackamas Federal Credit Union. After costs were paid, \$1,794 remained to support future operating and maintenance expenses at Hopkins.

"We were thrilled to be part of an event that brought our community together in a special way," said Luke McMurray, Credit Union Marketing Manager.



"All the volunteers, artists, and everyone at Hopkins were wonderful to work with... so much positive energy. I was inspired by the wood carving and enjoyed playing the musical instruments along the trail," he reported. I had a great time creating artwork and loved seeing my young children do the same. My three-year-old was captivated by the fairy houses (exhibited in the more formal art gallery in Forest Hall)."

Rusty Brown of Portland, a TRAG member, is already set to return in 2014 to install two totems in the forest that he's carving from Oregon ash. Three faces will appear on the five-foot totem he began carving during the Forest of Arts in 2013. He said a dragon will appear on a second totem which will be six inches longer.

Sue Ellen, who exhibited screenprints and other items in Forest Hall gallery, was among those looking forward to a repeat event at Hopkins. "I would come again even though it's an hour drive from my home in Brightwood," she said.



The future at Hopkins

Hopkins Completes New Education Plan in 2013!

If you haven't seen the new Education Plan for Hopkins Demonstration Forest check it out at our newly revamped website <http://www.demonstrationforest.org>. Over three years in the making, the plan is the first formal document developed for the forest and provides history and background for the organization, our educational philosophy and guiding principles, a description of the audiences and programs we offer, and specific learning themes for the educating we do.

An Education Committee, chaired by Hopkins Forestry Educator, Tim DeLano, and included Forests Forever, Inc., Board Members Maralyn Turner and Mike Bondi, plus the Oregon Forest Resource Institute's Norie Dimeo-Ediger, all worked together to produce the document that was published in July 2013.

According to Bondi, "The plan provides the framework for the education we do and gives educators an idea of the myriad of programs we offer and the kind of learning that is possible at Hopkins. In this way, I see the Hopkins Education Plan as a valuable document for anyone interested in forestry and natural resource education."

Changes Come to Hopkins

After eleven years, Tim DeLano is no longer serving as the Forestry Educator at the Hopkins Demonstration Forest. The change came following the *Forest of Arts* event held in October.

"The change in leadership for forestry education and community outreach at Hopkins will include a re-assessment of our program direction and a re-focus to our strengths and priorities," said Mike Bondi, chair of the Board of Directors of Forests Forever, Inc. (FFI). Throughout Tim's work with FFI and at Hopkins, he has always been an Oregon State University employee, whose program responsibility has been leading the education programs at the non-profit demonstration forest.



Beginning in mid-October, Tim was reassigned by OSU to serve the broader education needs of the Extension Forestry program in Clackamas County. His office was moved to the Clackamas County Extension office in Oregon City. Tim has been working closely with Extension Forestry Agent Glenn Ahrens during the remainder of his contract through June 30, 2014. That work includes woodland owner and youth education throughout the county.

According to Bondi, the re-examination of FFI's education programs comes at a good time. "We have nearly 25 years of education experience in the community and have seen amazing growth and evolution over this time. We recently completed our first education plan for the organization and believe we see new priorities and opportunities. Tim's contributions over the past decade have been outstanding and have taken our organization to a new level. The Board is looking forward to what the next decade will bring and a fresh look at new possibilities."

Some programming continues like the monthly Community Forestry Days which are held on the second Saturday of each month at Hopkins. These have been a tradition since 1991. Forestry Days are hands-on work experiences for woodland owners and the public to help manage and care for the demonstration forest. Also, school tours and youth education programs are continuing and a focus for the remainder of the current school year. Beginning in January, 2014, Forests Forever, Inc. contracted with Peter Matzka of Silverton, to lead the education programs at Hopkins. He is currently on contract with the non-profit organization through December during the transition in our education program.

"We are re-assessing and re-organizing our programs and staffing as we move forward in 2014. In the meantime, Hopkins Demonstration Forest is continuing its primary mission--forestry and natural resource education where learning and growing go hand in hand. We expect to have a very busy spring and summer. We have a lot of work to do at Hopkins and 'learning by doing' is what we are all about."

During the past 18 months, the Forests Forever, Inc. Board of Directors has seen several new faces added to the team that manages Hopkins Demonstration Forest. The new Board members include: Fran Caferatta Coe, Maralyn Turner, Rick Gruen, Frank Wille, and Mike Haasken.

"We have a very talented Board who provide dedicated oversight and direction for our programs and mission in the community. They all have wonderful experience in business, education and government," Bondi said.

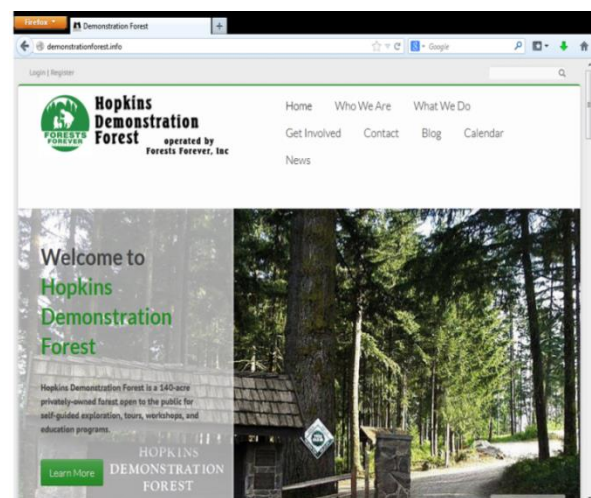
For more information about the education and community outreach programs at Hopkins, contact Mike Bondi at 503-705-2434 or michael.bondi@oregonstate.edu.

FFI Launches Revised Website

Forests Forever, Inc. has launched a new website designed to make information more accessible about Hopkins Demonstration Forest and more visually appealing, as well. The website includes historical information about the non-profit organization, our primary mission of education for youth, teachers, and the public, and information about what is going on at the forest.

"A website revision was long-overdue," said Ken Everett, FFI's Executive Director. "We've added several new elements including lots of photos showing what we do, our daily calendar of events, and a blog." The blog will feature current topics that are designed to stimulate discussion with those following. The first blog addresses the concept of sustainability.

Check out the new website at www.demonstrationforest.org.



Program Partners—finding a great place to do outdoor education

A number of community partners and educators find Hopkins Demonstration Forest a great place for education in a forest environment. For the programs listed below, these groups do all their own education program design and delivery. We simply provide the place... our forest and facilities.



4-H Cloverbuds enjoyed our forest for two week-long summer camps. This was the second year for the Cloverbud Camp program at Hopkins and is sponsored by the OSU Extension Service. This program provides a first-time camp experience to children kindergarten through grade three. The 4-H program is introduced to these children at camp as well as targeting the underserved Hispanic community.



Clackamas Community College (CCC) classes in Forestry, Wilderness Survival, and Search and Rescue used Hopkins Demonstration Forest for field classes, field practicums, and finals. A basic forestry class was offered through CCC that used Hopkins for field labs weekly during one term.



OSU's Extension Forestry Program uses Hopkins for a variety of its workshops, tours and demonstrations throughout the year. During 2013, a new training group for OSU's Master Woodland Manager program utilized Hopkins as one of their teaching sites in the Portland area. Tree School also uses the forest each year in March. Everyone at OSU knows it's great to have your own forest!



WolfTree is a non-profit organization dedicated to serve people and their communities through innovative science education, ecosystem restoration, and ecological research.



Oregon Department of Forestry Fuels Reduction Crew completed property line fuel break development and maintenance along the west and north boundary lines this past July. Hopkins provided a good project and training site.



Cloverbud camp.



Department of Forestry.

